

Madison, Wisconsin

CITY OF MADISON

CITY ENGINEERING DIVISION

DEPARTMENT OF PUBLIC WORKS


PLAN OF PROPOSED IMPROVEMENT

PUBLIC IMPROVEMENT PROJECT APPROVED

JANUARY 5, 2016

BY THE COMMON COUNCIL OF MADISON, WISCONSIN

PUBLIC IMPROVEMENT DESIGN APPROVED BY:

 1/15/16
City Engineer Date

STORM SEWER DESIGNED BY:



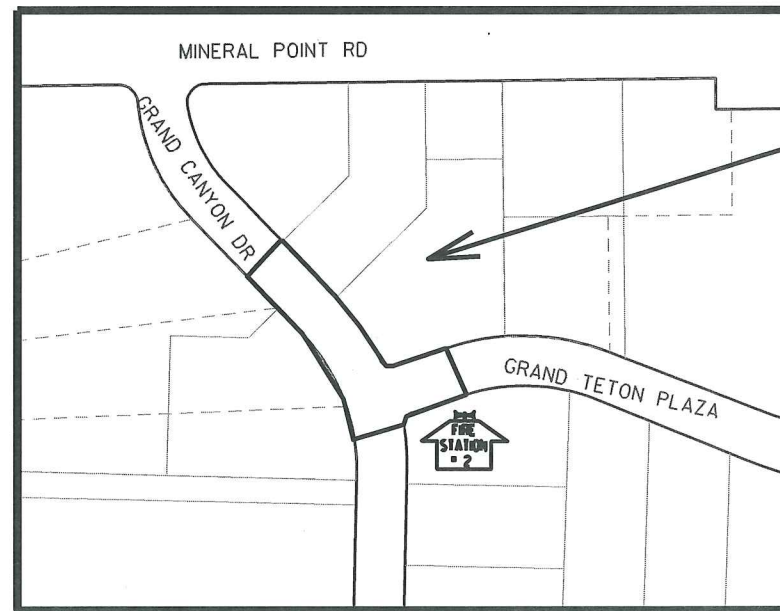
INDEX OF SHEETS

SHEET NO.	TITLE
1	
U-1	SEWER PLAN & PROFILE - ANDREW WAY
U-2	SEWER SCHEDULE - ANDREW WAY
U-3	SEWER PLAN & PROFILE - GRAND CANYON DR
U-4	SEWER SCHEDULE - GRAND CANYON DR

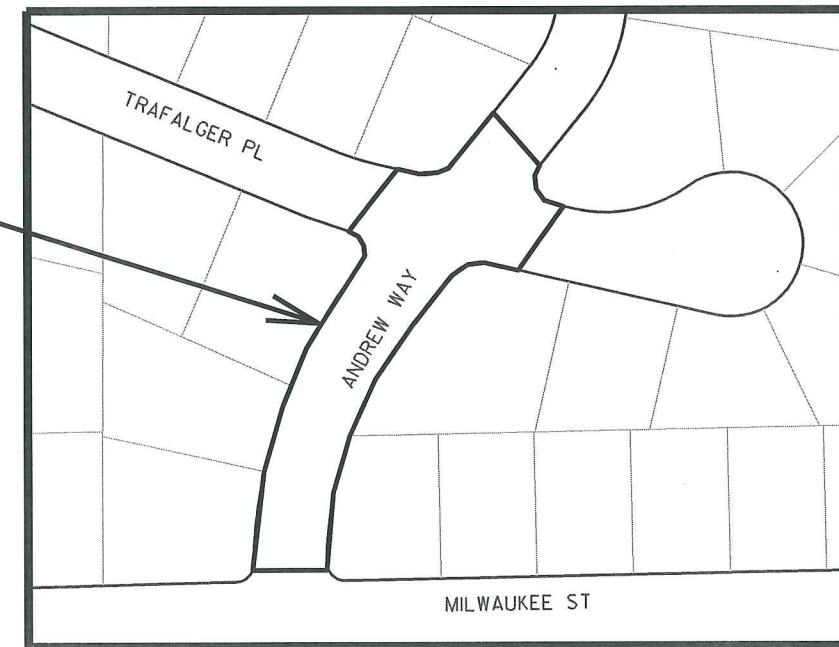
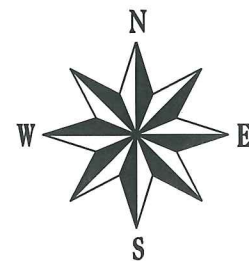
RESURFACING 2016 (STORM SEWER)

CITY PROJECT NO. 10895

CONTRACT NO. 7615



CONSTRUCTION PROJECT LOCATIONS

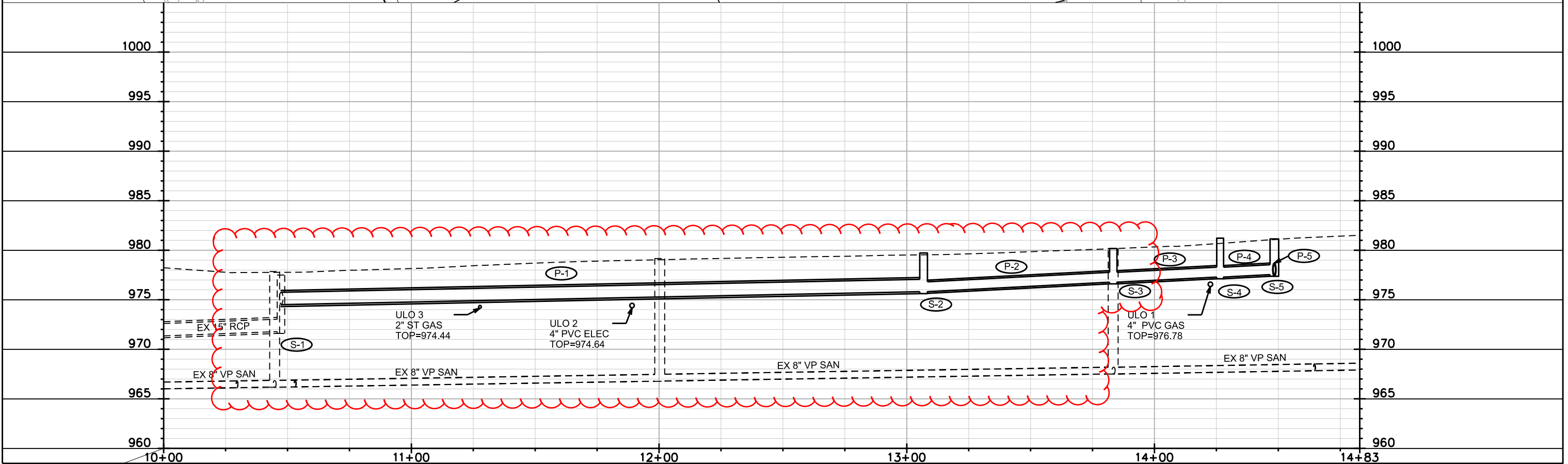
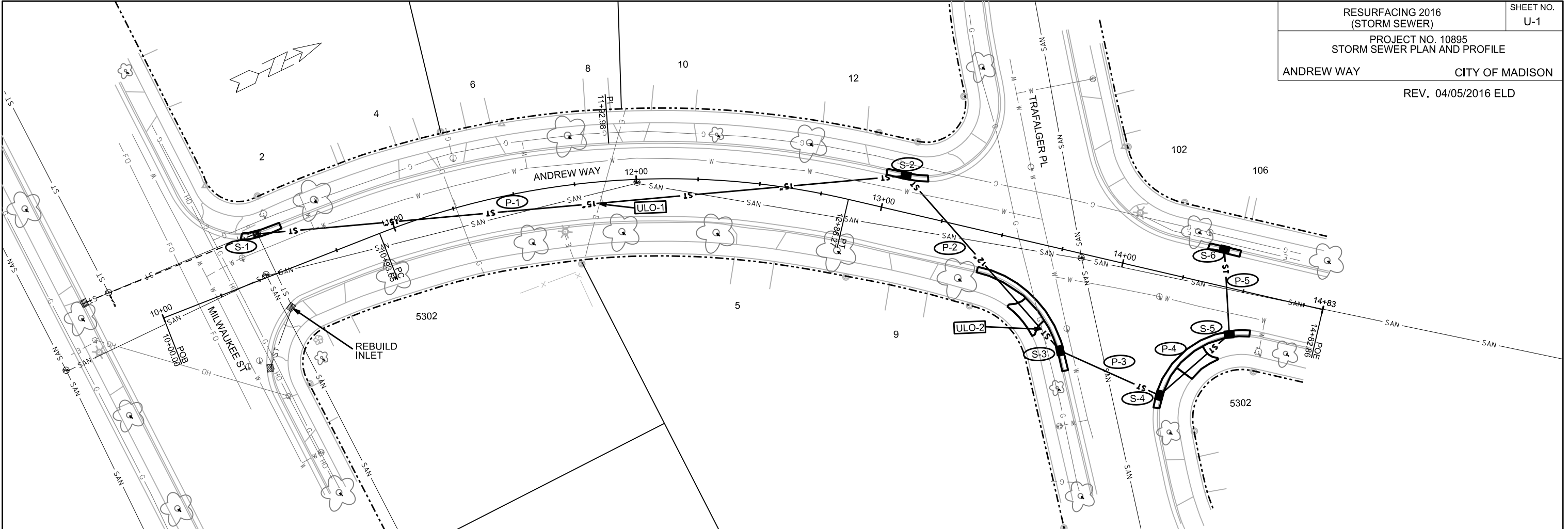


PLOT SCALE:

PLOT NAME:

REV. DATE:

ORIGINATOR: CITY OF MADISON, STREETS DIVISION



PLOT SCALE: _____

PLOT NAME: _____

REV. DATE: _____

ORIGINATOR: CITY OF MADISON, STREETS DIVISION

STORM SEWER SCHEDULE

REV 04/05/2016 ELD

RESURFACING 2016 (STORM SEWER)	SHEET NO. U-2
PROJECT NO. 10895 STORM SEWER SCHEDULE ANDREW WAY CITY OF MADISON	

STRUCTURES

STRUC. NO.	STATION	LOCATION (OFFSET)	TYPE	TOP OF CASTING	E.I.	DEPTH	NOTES
* S-1	10+47.53	LT-18.25	STM TAP	-	974.50	-	TAP EX IN 7039-001
* S-2	13+06.81	LT-14.61	H INLET	979.72	975.81	3.91	W/ R-3067-7004-V
S-3	13+83.36	RT-40.17	H INLET	980.17	976.77	3.40	W/ R-3067-7004-V
S-4	14+28.02	RT-48.95	H INLET	981.21	977.29	3.92	W/ R-3067-7004-V
S-5	14+48.39	RT-18.28	H INLET	981.14	977.54	3.60	W/ R-3067-7004-V
S-6	14+38.72	LT-14.69	H INLET	980.82	977.82	3.00	W/ R-3067-7004-V

PIPES

PIPE NO.	FROM (DNSTM)	TO (UPSTM)	PLAN LGTH (FT)	PIPE LGTH (FT)	DISCH. E.I.	INLET E.I.	SLOPE (%)	PIPE SIZE	TYPE	NOTES
* P-1	S-1	S-2	263	262	974.50	975.81	0.50%	15"	RCP	-
* P-2	S-2	S-3	94	91	975.81	976.77	1.06%	12"	RCP	-
P-3	S-3	S-4	44	42	976.77	977.29	1.25%	12"	RCP	-
P-4	S-4	S-5	37	34	977.29	977.54	0.74%	12"	RCP	-
P-5	S-5	S-6	34	32	977.54	977.82	0.87%	12"	RCP	-

ULO SCHEDULE

ID NO.	STATION	LOCATION (OFFSET)	TYPE	NOTES
ULO-1	13.75.00	RT-36.7	GAS (4" PL) TOP=976.78	REVISED STORM
ULO-2	11+85.20	RT-6.3	ELEC (4" PVC) TOP=974.64	REVISED STORM
ULO-3	11+26.10	LT-3.2	GAS (2" ST) TOP=974.44	NO CONFLICT

SPECIFIC NOTES

STANDARD NOTES:

- ABBREVIATIONS: AE = APRON ENDWALL; RCP = REINFORCED CONCRETE PIPE; HERCP = HORIZONTAL ELLIPTICAL REINFORCED CONCRETE PIPE; DNA = DOES NOT APPLY; SAS = SEWER ACCESS STRUCTURE; LP = LOW POINT INLET STRUCTURE; FP = FIELD POURED STRUCTURE; TR = TOP OF CONCRETE ROOF; NCM = NO CROWN MATCH FOR PIPES
- APPROXIMATE DISCHARGE E.I. GIVEN, ADJUST E.I. AND PIPE SLOPE IN THE FIELD.
- TOP OF CASTING GRADE GIVEN IS THE TOP OF CURB FOR INLET STRUCTURES AND THE FLOWLINE OF THE CLOSED CASTING FOR SAS's.
- TOP OF CONCRETE ROOF (TR) IS 1.25' BELOW TOP OF CASTING UNLESS OTHERWISE NOTED.
- ALL REINFORCED CONCRETE PIPES TO BE CLASS III UNLESS OTHERWISE NOTED.
- SURVEYOR TO CONFIRM THAT ALL INLET STATION / OFFSETS LINE UP WITH PROPOSED CURB AND GUTTER.
- ALL STRUCTURES CALLED OUT AS FIELD POURED SHALL BE FIELD POURED. ALL OTHER STRUCTURES (NOT INDICATED AS FIELD POURED) SHALL BE SUBMITTED TO CITY ENGINEERING FOR APPROVAL IF PRECAST STRUCTURES ARE PREFERRED. CONTACT ERIC DUNDEE OF CITY ENGINEERING AT (608) 266-4913 FOR PRECAST APPROVALS, OR FAX SHOP DRAWINGS TO (608)264-9275.

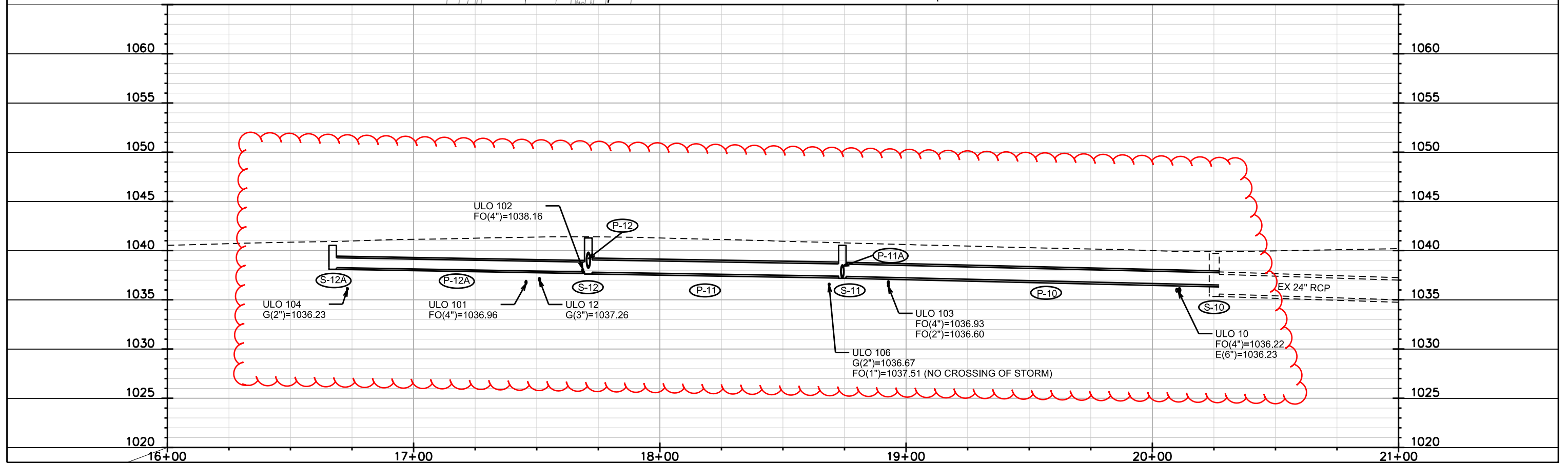
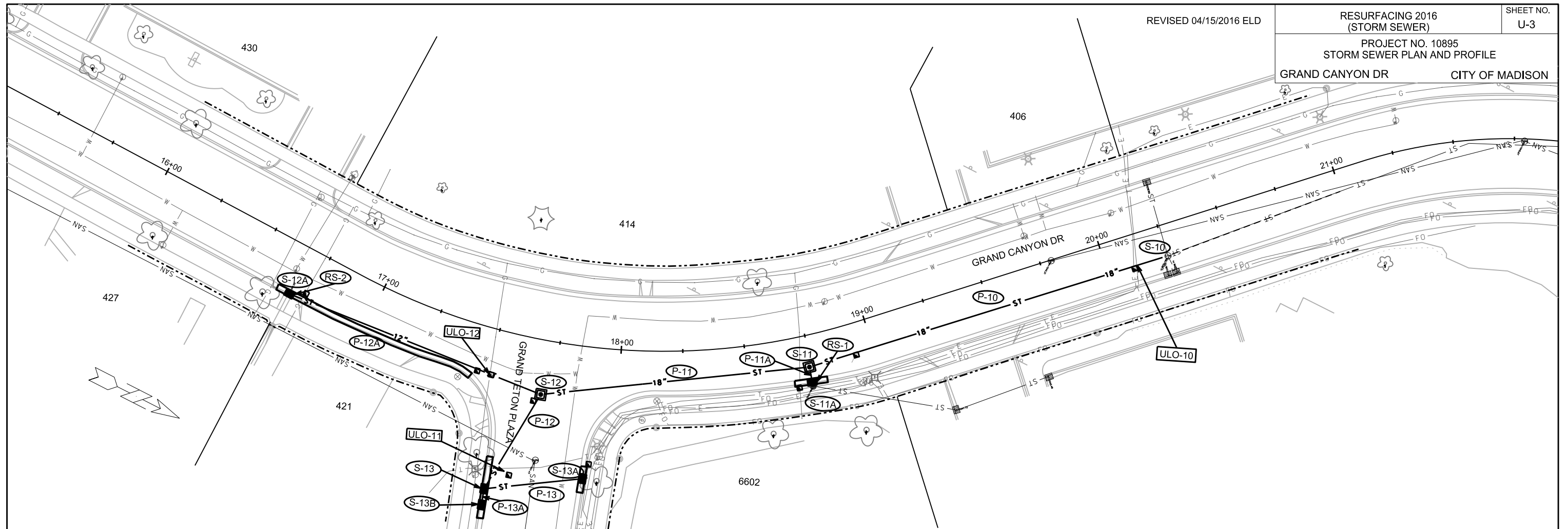
REVISED 04/15/2016 ELD

RESURFACING 2016
(STORM SEWER)

SHEET NO.
U-3

PROJECT NO. 10895
STORM SEWER PLAN AND PROFILE

GRAND CANYON DR CITY OF MADISON



PLOT SCALE: _____

PLOT NAME: _____

REV. DATE: _____

ORIGINATOR: CITY OF MADISON, STREETS DIVISION

STORM SEWER SCHEDULE

REV 04/15/2016 ELD

RESURFACING 2016 (STORM SEWER)	SHEET NO. U-4
PROJECT NO. 10895 STORM SEWER SCHEDULE GRAND CANYON DR CITY OF MADISON	

STRUCTURES

STRUC. NO.	STATION	LOCATION (OFFSET)	TYPE	TOP OF CASTING	E.I.	DEPTH	NOTES
S-10	20+25.46	RT-12.75	STM TAP	-	1036.50	-	TAP EX AS 2856-012
* S-11	18+74.00	RT-12.70	3X3 SAS	1040.54	1037.39	3.15	W/ R-1550, FP
S-11A	18+73.78	RT-19.50	H INLET	1040.82	1037.43	3.39	W/ R-3067-7004-V; (1)
* S-12	17+71.00	RT-22.25	3X3 SAS	1041.29	1037.82	3.47	W/ R-1550, FP
S-12A	16+67.14	RT-20.43	H INLET	1040.53	1038.28	2.25	W/ R-1878-B7G
* S-13	17+57.47	RT-64.22	H INLET	1041.67	1039.10	2.57	W/ R-3067-7004-V, FP
* S-13A	17+90.68	RT-53.48	H INLET	1041.42	1039.18	2.24	W/ R-3067-7004-V, FP
* S-13B	17+57.83	RT-70.76	H INLET	1041.71	1039.12	2.59	W/ R-3067-7004-V, FP

PIPES

PIPE NO.	FROM (DNSTM)	TO (UPSTM)	PLAN LGTH (FT)	PIPE LGTH (FT)	DISCH. E.I.	INLET E.I.	SLOPE (%)	PIPE SIZE	TYPE	NOTES
* P-10	S-10	S-11	152	149	1036.50	1037.39	0.60%	15"	RCP	-
* P-11	S-11	S-12	110	107	1037.39	1037.82	0.40%	15"	RCP	-
* P-11A	S-11	S-11A	6	4	1037.39	1037.43	1.00%	12"	RCP	-
* P-12	S-12	S-13	45	41	1038.40	1039.10	1.70%	12"	RCP	-
* P-12A	S-12	S-12A	110	107	1037.82	1038.28	0.43%	12"	RCP	NCM
* P-13	S-13	S-13A	40	38	1039.10	1039.18	0.20%	8"	C900 or DI	-
* P-13A	S-13	S-13B	7	4	1039.10	1039.12	0.50%	12"	RCP	-

STORM STRUCTURE REMOVALS

STRUC. NO.	STATION	LOCATION (OFFSET)	TYPE	NOTES
RS-1	18+76.53	RT-9.44	SCUPPER	-
RS-2	16+67.14	RT-20.43	SCUPPER	-

ULO SCHEDULE

ID NO.	STATION	LOCATION (OFFSET)	TYPE	NOTES
ULO-10	20+11.00	RT-13.58	FO(4") & ELEC(6")	STORM RELOCATED
ULO-11	17+65.27	RT-56.61	FO(3")	STORM RELOCATED
ULO-12	17+51.11	RT-18.50	GAS(3")	NO CONFLICT
ULO-101	17+45.66	RT-18.40	FO(4")	NO CONFLICT
ULO-102	17+68.68	RT-25.09	FO(4")	STORM RELOCATED
ULO-103	18+92.82	RT-12.84	FO(4") & FO(2")	STORM RELOCATED
ULO-104	16+73.10	RT-17.20	GAS (2")	NO CONFLICT
ULO-105	17+91.44	RT-47.36	ELEC(4")	NO CONFLICT
ULO-106	18+68.77	RT-20.27	FO(1") & GAS(2")	NO CONFLICT

STANDARD NOTES:

- ABBREVIATIONS: AE = APRON ENDWALL; RCP = REINFORCED CONCRETE PIPE; HERCP = HORIZONTAL ELLIPTICAL REINFORCED CONCRETE PIPE; DNA = DOES NOT APPLY; SAS = SEWER ACCESS STRUCTURE; LP = LOW POINT INLET STRUCTURE; FP = FIELD POURED STRUCTURE; TR = TOP OF CONCRETE ROOF; NCM = NO CROWN MATCH FOR PIPES
- APPROXIMATE DISCHARGE E.I. GIVEN, ADJUST E.I. AND PIPE SLOPE IN THE FIELD.
- TOP OF CASTING GRADE GIVEN IS THE TOP OF CURB FOR INLET STRUCTURES AND THE FLOWLINE OF THE CLOSED CASTING FOR SAS's.
- TOP OF CONCRETE ROOF (TR) IS 1.25' BELOW TOP OF CASTING UNLESS OTHERWISE NOTED.
- ALL REINFORCED CONCRETE PIPES TO BE CLASS III UNLESS OTHERWISE NOTED.
- SURVEYOR TO CONFIRM THAT ALL INLET STATION / OFFSETS LINE UP WITH PROPOSED CURB AND GUTTER.
- ALL STRUCTURES CALLED OUT AS FIELD POURED SHALL BE FIELD POURED. ALL OTHER STRUCTURES (NOT INDICATED AS FIELD POURED) SHALL BE SUBMITTED TO CITY ENGINEERING FOR APPROVAL IF PRECAST STRUCTURES ARE PREFERRED. CONTACT ERIC DUNDEE OF CITY ENGINEERING AT (608) 266-4913 FOR PRECAST APPROVALS, OR FAX SHOP DRAWINGS TO (608)264-9275.

SPECIFIC NOTES

- (1) RECONNECT EXISTING PRIVATE PIPE